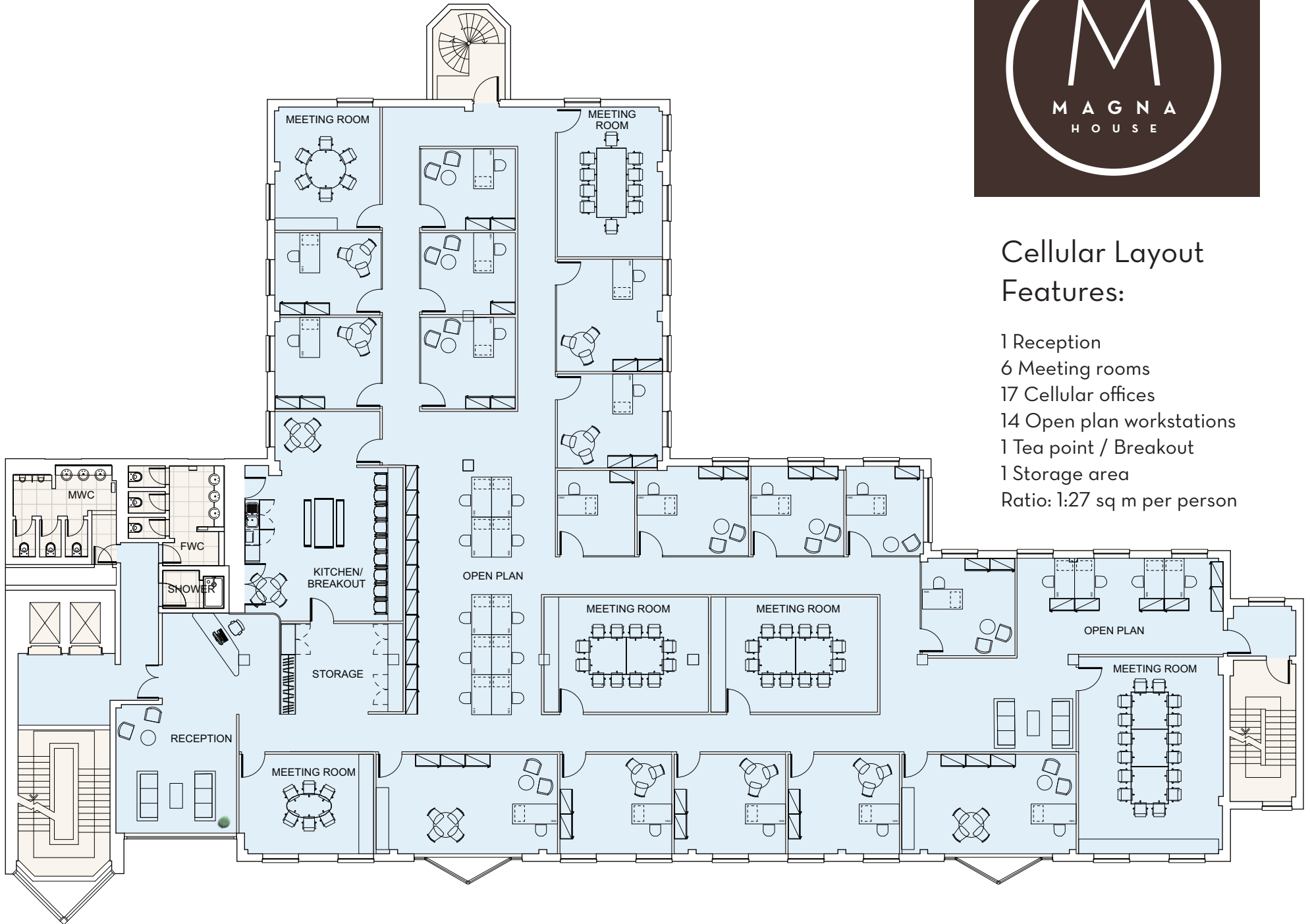


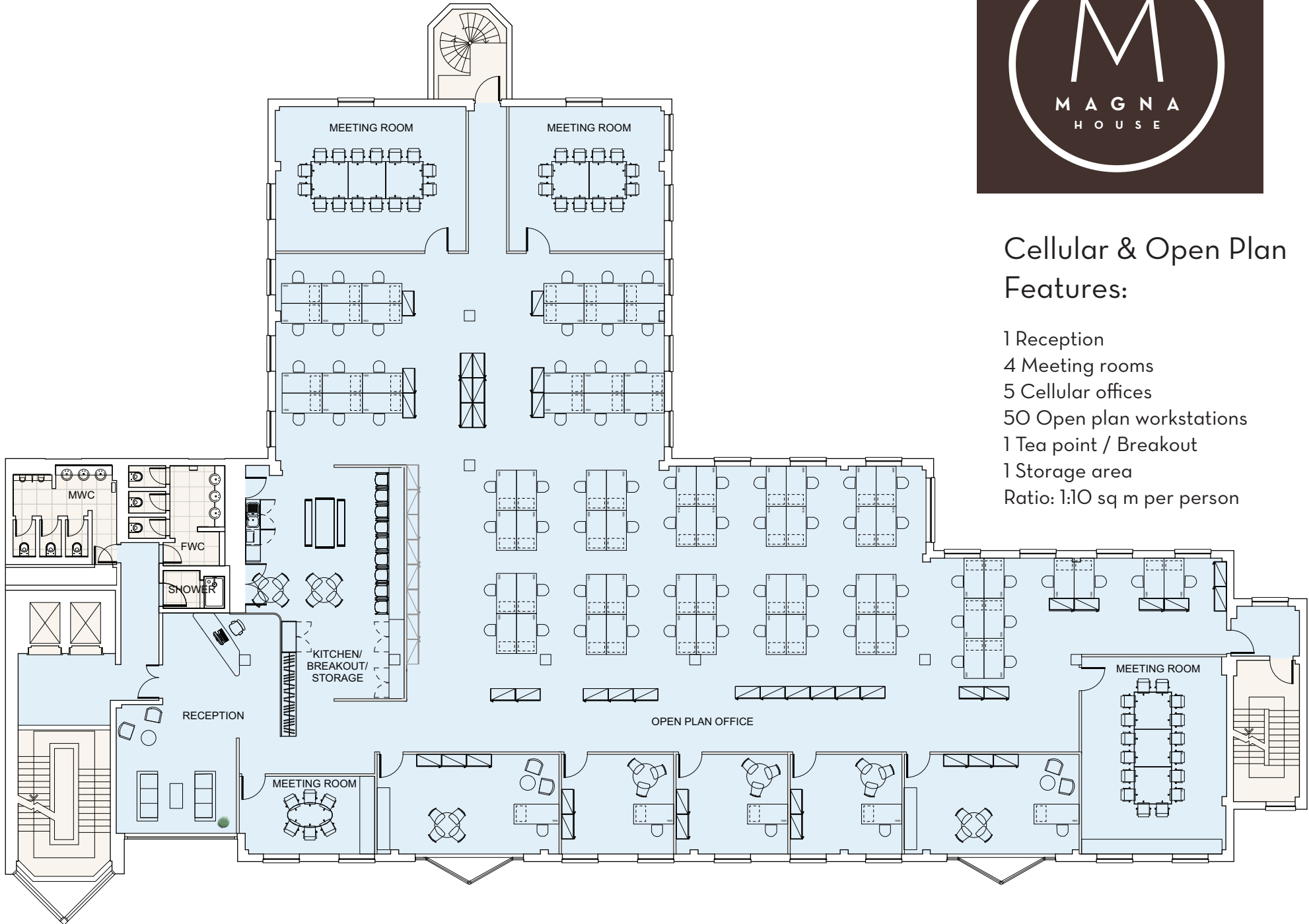
Open Plan Layout Features:

- 1 Reception
- 3 Meeting rooms
- 1 Tea point / Breakout
- Ratio: 1:6 sq m per person



Cellular Layout Features:

- 1 Reception
- 6 Meeting rooms
- 17 Cellular offices
- 14 Open plan workstations
- 1 Tea point / Breakout
- 1 Storage area
- Ratio: 1:27 sq m per person



Cellular & Open Plan Features:

- 1 Reception
- 4 Meeting rooms
- 5 Cellular offices
- 50 Open plan workstations
- 1 Tea point / Breakout
- 1 Storage area
- Ratio: 1:10 sq m per person